

# Dogger Bank South Offshore Wind Farms Community Newsletter

## Welcome

**Welcome to the first edition of the Dogger Bank South (DBS) Offshore Wind Farms Community Newsletter.**

DBS is made up of two separate sites, DBS East and DBS West, which are located over 100 km off the northeast coast of England at the shallow offshore area of the North Sea known as Dogger Bank.

Each project could have an installed capacity of up to 1.5 GW meaning that the projects could generate enough clean, green renewable energy to power up to 3.4 million typical UK households per year.

Since being announced as 'Preferred Bidder' for the sites back in 2021, we have undertaken a vast amount of site selection work and are now able to present and consult on our early stage project proposals. This consultation will give local stakeholders the opportunity to view our plans and provide comments to help shape the scheme as we move through the development phase of the projects.

The consultation will open on 9th September 2022 and will involve consultees such as local councils, residents and parish councils. This newsletter will explain the various ways you can get involved and respond.

We will also be holding a series of public exhibitions to give everyone the chance to find out more and meet members of the DBS team.

We know that coronavirus is still a massive concern for many, so we have set up an online consultation platform to enable those who are unable to attend events in person to view all the information and easily respond. Further details on the platform are provided on the back page.

We are keen to get your views, as they will help us shape the project as it develops.

We hope this newsletter is useful, and we will produce further issues to keep you up to date as the projects evolve.

**Trevor Baker**  
**Projects Lead – Dogger Bank South**

Wind turbines installed at the Triton Knoll Offshore Wind Farm – image does not represent the size or scale of DBS



## The story so far

**RWE was awarded the status of ‘preferred bidder’ for the two adjacent sites which make up Dogger Bank South (DBS) in The Crown Estate’s Offshore Wind Leasing Round 4 tender process in February 2021.**

Following the conclusion of the Habitats Regulations Assessment process in July 2022, The Crown Estate announced its intention to enter into Agreements for Lease with RWE, giving seabed development rights for the sites.

Although the projects are at an early stage, offshore and onshore surveys are already underway as part of the development process.

Since being awarded preferred bidder status, RWE has been engaged in a process of site selection, aiming at connecting the proposed offshore wind farms to the National Grid.

National Grid ESO, the UK electrical system operator, has recently completed a Holistic Network Design (HND) process with the aim of designing a future-proofed solution for the National Grid which allows for planned offshore wind expansion in a way which is economical and efficient, and considers the impact on the environment and local communities.

The results of the HND process were published in July 2022 and identified that connections for both projects to the UK electricity network would be made at a new National Grid substation in the vicinity of the existing National Grid Creyke Beck substation.

With the offshore array area and grid connection locations established, the team have been focused on identifying suitable offshore and onshore export cable corridors potential locations for the landfall and onshore substations.

RWE has sought to strike a balance between commercial, engineering, environmental and social considerations which will minimise impacts on local communities and the environment where possible.

The results of the site selection work to date are set out in this consultation. Further refinements of the site selection work will be set out in a future consultation.

# The Offshore Array

## The Offshore Array comprises

- The wind turbines and foundations.
- The offshore substations.
- The array cables linking the wind turbines and the offshore substations.
- The Service Operation Vehicle mobile facility for operations and maintenance staff and equipment.

The number of wind turbines for each site has not yet been determined, but the design allows for up to 150 for each project.

## The Electrical System

The Electrical System is required to connect the wind farm to the national grid, and includes:

- An offshore export cable route which will transport the electricity generated from the offshore array to shore.

- Onshore buried jointing pits, located at a 'landfall' on the Holderness coast, where the offshore and onshore electricity cables connect to each other.
- An onshore underground export cable route, which will be up to 100 m (328 feet) wide, to accommodate cables that transmit the electricity from the offshore wind turbines to new onshore substations located near to the national grid connection point.
- Onshore electricity substations (one for each project) which will transform the electricity to a voltage suitable for connection to the national grid. The substation equipment may need approximately 20 hectares (50 acres) of land.
- An additional length of onshore underground cables to transmit the electricity from the new DBS substations to the new national grid substation.

## Diagram of proposed DBS East Wind Farm

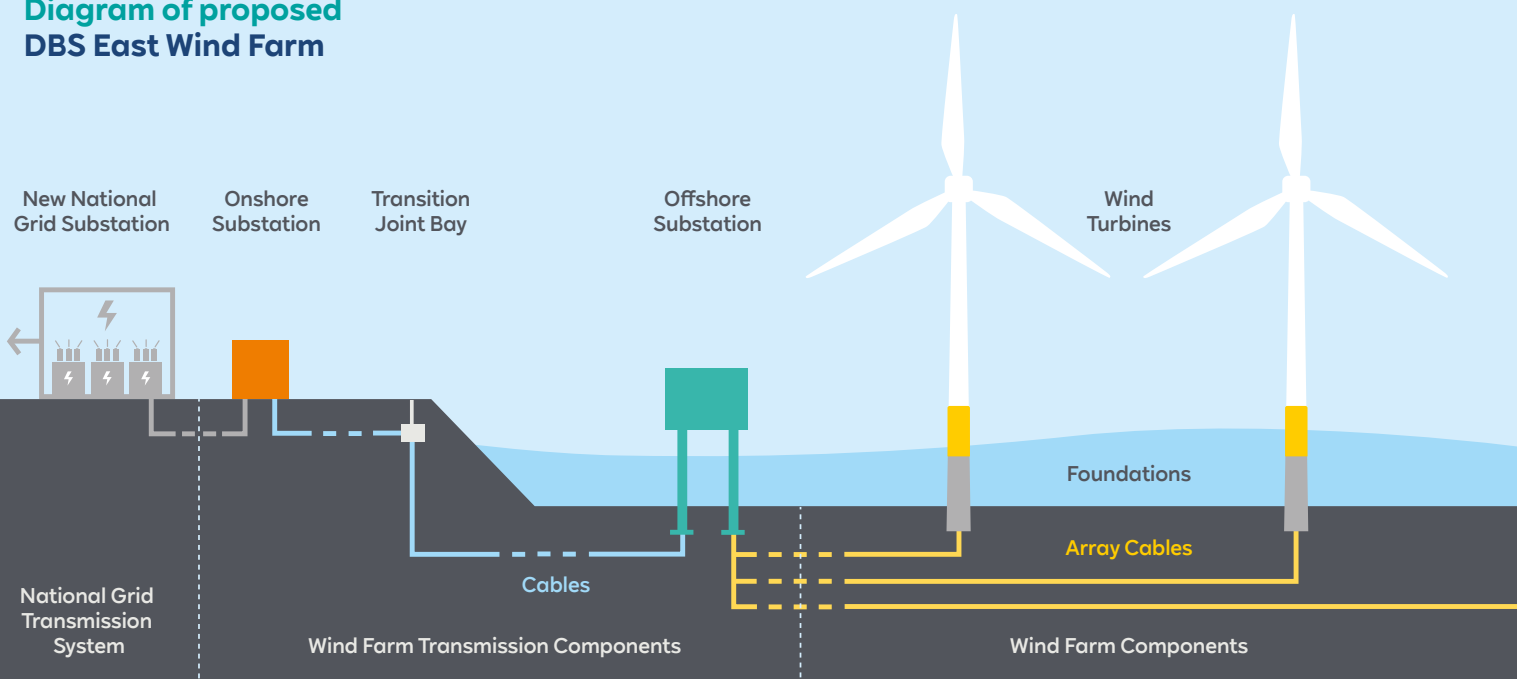


Diagram is a simplified representation only and is not to scale. Actual distances will be dependent on geography of the project. Diagram shows the components of one DBS wind farm. Both DBS East and DBS West will require separate own infrastructure.

**A figure showing the components of DBS East**

# Our Introductory Consultation

Our consultation will enable you to have your say on the project proposals, including where the onshore electrical infrastructure could be located in the East Riding of Yorkshire.

It will begin on **9th September 2022** and run until **14th October 2022**.

We understand local people have a wealth of knowledge and may be able to alert us to issues affecting the potential electrical infrastructure locations.

The process will provide you with lots of useful information around our project proposals, including the offshore array, offshore and onshore export cable corridors and the potential locations for landfall and substations for each of the projects. We welcome comments on all aspects of the wind farms.

Public exhibitions will provide an opportunity to meet members of the project team who will be available to answer questions. Dates, times and venues can be found on the next page.

All the information presented will also be available on our dedicated online consultation website  
[www.rwe.com/doggerbanksouth](http://www.rwe.com/doggerbanksouth)

## How will we consult and who with?

**To gain views on our plans for the project, we will use:**

- **Questionnaires** – questionnaires will be available at our public exhibition events, can be downloaded from our website and can be requested by contacting the team using the contact details at the end of this newsletter. You will also be able to respond using our dedicated online consultation website. Letters inviting people to take part have been sent to all addresses within 1.5 km of each shortlisted substation and landfall zone and within 1 km of our proposed onshore cable corridor.

**Letters will also be sent to:**

- Local elected representatives.
- Parish and Town councils in which our electrical infrastructure could be located.
- Interested parties who have consulted with us previously and expressed an interest in continuing to receive information.

Anyone can complete a questionnaire and all feedback will be considered. Completed questionnaires can be returned to the project team by posting to

**FREEPOST DBSOWF.**

- **Public exhibitions** – all are welcome at our public exhibitions which will be held at the times, dates and locations in the table on the next page.
- **Newsletters** – this newsletter is available on our project website and can be requested in hard copy by contacting the team using the details at the end of this newsletter.

**Hard copy newsletters will also be sent to:**

- Local elected representatives.
- Parish and town councils in which our electrical infrastructure could be located.





**Engagement with elected representatives and parishes** – we will keep regionally and locally-elected politicians informed of our proposals. We will also offer additional copies of documents to parish clerks so they can choose the best locations to provide information to their community.

Details on the consultation will also be made available on the DBS website and through press releases issued to the local media.

Date	Time	Location
27th September 2022	2pm – 6pm	Skipsea Village Hall, Bridlington Rd, Skipsea, Driffield YO25 8TJ
28th September 2022	3pm – 7pm	Beverley Memorial Hall, 73-75 Lairgate, Beverley, HU17 8HN
7th October 2022	3pm – 7pm	Catwick Village Hall, Rowpit Lane, Riston Road, Catwick, Beverley, HU17 5PR
8th October 2022	11am – 3pm	Beverley Memorial Hall, 73-75 Lairgate, Beverley, HU17 8HN

# How to respond to the consultation

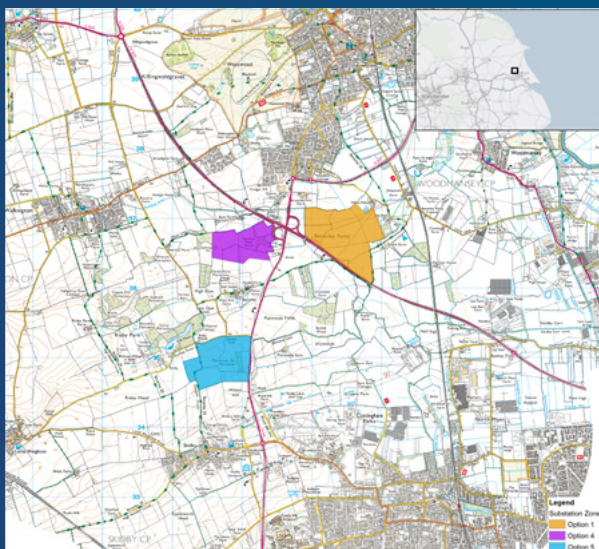
**You can respond by completing a questionnaire which you can find:**

- On our dedicated consultation website – [www.rwe.com/doggerbanksouth](http://www.rwe.com/doggerbanksouth).
- At our public exhibitions.
- By requesting a copy from the team (contact details at the end of this newsletter).

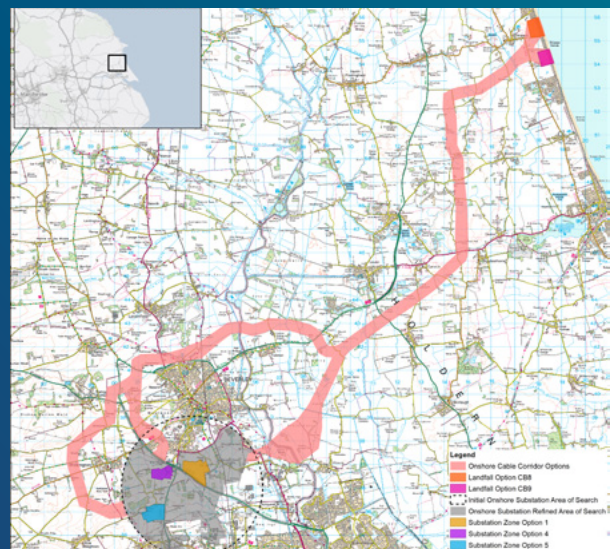
**Consultation responses must be received by 5pm on 14th October 2022.**

We will endeavour to include responses received after this date but this cannot be guaranteed.

Your comments may be made public in a consultation report which will record comments received and explain how the consultees' views have been considered in developing the final application. The Consultation Report could become part of our planning application. All comments included within the report will remain anonymous.



Our shortlisted onshore substation zones which will be available to view online or at our public exhibition events.



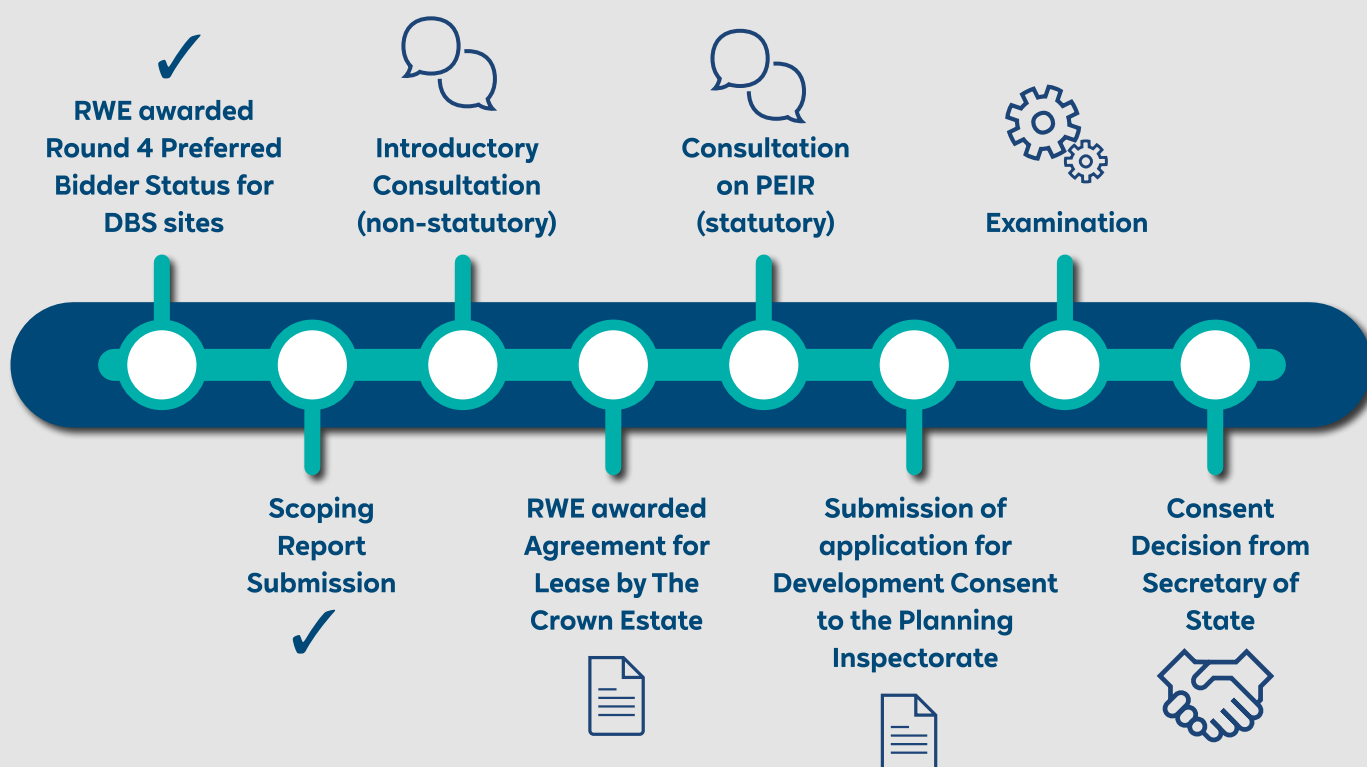
Our proposed onshore cable corridor which will be available to view online or at our public exhibition events.

# Next Steps

We will continue with our environmental and engineering studies and, along with feedback received from our consultation, we will look to further refine our project proposals. We will also select the technology to connect the offshore wind farm to the electricity network. As this work progresses, we will keep the community updated

on our proposals via our website and community newsletters. There will be a further opportunity to have your say later in the project, when we will consult on our Preliminary Environmental Information Report (PEIR). The PEIR consultation is statutory and will follow the processes set out in the Planning Act 2008.

## Development Milestones



### Further information

For more background information on the project, please visit our project website at [www.rwe.com/doggerbanksouth](http://www.rwe.com/doggerbanksouth)

#### Contact us:

**Email:** [dbs@rwe.com](mailto:dbs@rwe.com)

**Telephone:** 0800 254 5459

**Website:** [www.rwe.com/doggerbanksouth](http://www.rwe.com/doggerbanksouth)

**Post:** FREEPOST DBSOWF