

Dogger Bank South Offshore Wind Farms Community Newsletter

Welcome

Welcome to the second edition of the Dogger Bank South (DBS) Offshore Wind Farms Community Newsletter.

Firstly, I would like to say a huge ‘thank you’ to everyone who took the time to take part in our Introductory Consultation which ran from 9th September to 14th October 2022. We had great attendance at our public exhibition events and it was lovely to meet so many members of the community to discuss our proposals. The feedback received was of a high quality and has really helped shape the projects. If you would like to find out more information around the consultation and view our responses to key themes raised, you can read more on pages 2 and 3 of this newsletter.

The team has collated the information received during the public exhibition events and, in combination with engineering studies and site characterisation surveys, deselected from our substation and routing options. You can find out how these decisions were taken and what this means for the projects on pages 4 and 5.

Over the coming months, we will be undertaking further surveys and assessments to develop a Preliminary Environmental Information Report (PEIR) for the DBS projects. The PEIR will be

the subject of our statutory consultation which is currently due to launch in Spring 2023. Our statutory consultation will be the next opportunity to have your say on our proposals prior to the project planning applications being finalised. Further information on this consultation will be available in the new year and will be advertised in advance of the consultation period opening.

Later in the newsletter, you can read about our ongoing onshore and offshore site characterisation surveys including why they are being undertaken and what information we are gaining from them.

I hope that you find the information contained in this newsletter useful. If you would like to register to receive postal or electronic copies of our newsletters in the future, please contact us using the details on the back of this newsletter.

Trevor Baker
Projects Lead – Dogger Bank South

Introductory Consultation



Between 9th September and 14th October 2022 an Introductory Consultation on our proposals was held.

The purpose of the consultation was to:

- Introduce the projects;
- Explain the site selection process and options for the substation zones and onshore cable corridor;
- Collect feedback on the onshore elements of the proposals.

Although the consultation is now closed, you can still view the information we published, including the consultation banners, on our website, www.rwe.com/doggerbanksouth.

Our Introductory Consultation in numbers

- We sent invitations to around **19,000 homes** and businesses within our consultation mailing zone, along with letters and emails to local MPs, councilors and parish councils;
- We held **four public exhibitions** in the East Riding of Yorkshire;
- We had **679 visitors** to the consultation pages on our website;
- We received **64 consultation responses** from members of the local community, parish councils and other stakeholders, via online and paper questionnaires and emails;
- **393** people attended our four public exhibitions.

We would like to thank everyone who came to our events and who provided feedback.

What we heard from your feedback

Many people provided feedback on our proposals, as well as local information on features along the proposed cable route options and near to the proposed substation site options.

The table on the right presents an overview of the key themes raised by stakeholders in response to our consultation. A detailed breakdown of all consultation responses and how they have been considered will be published on our website in our **Introductory Consultation Feedback Report**.

Further opportunities to comment

In Spring 2023, we plan to hold a further consultation to present more detailed proposals and to consult on the PEIR. This will be another opportunity to comment on our proposals.

This will be the statutory consultation under the Planning Act 2008 and before the start, we will publish a 'Statement of Community Consultation', which will set out the details of how we plan to consult with the local community.

Responses to the statutory consultation will be considered by the team in the development of our application and will be set out in detail in a Consultation Report that will be submitted as part of the application for a Development Consent Order.

Theme	Summary of feedback	What we're doing
Archaeology and cultural heritage	We received a lot of detailed information on the locations of archaeological and heritage sites, scheduled monuments and listed buildings.	We are carrying out detailed archeological surveys and heritage resource assessments as part of the Environment Impact Assessment (EIA) process. We will report the findings in our PEIR.
Ecology	Many respondents provided information on areas important to wildlife and on different species which can be found across the area.	We are carrying out habitat and species characterisation surveys to understand their local presence and distribution. We will work with Natural England and other consultees to identify what steps we can take to reduce potential impacts on local wildlife.
Landscape and visual	Some respondents raised concerns about the potential visual impact of development within the different substation zones and how views might be affected.	We will carry out a Landscape and Visual Impact Assessment as part of the EIA to consider any potential visual impacts of the substations. The project will include planting and landscaping at the substation locations if required to mitigate the impacts of the scheme and to help screen the new infrastructure and soften potential visual impacts.
Public rights of way (PRoW)	Some respondents highlighted the importance of ensuring minimal impacts on PRoW during construction.	We are aware of PRoW in the local area and will work with the local authority and other consultees to agree how they can be managed during construction.
Flood risk and drainage	We received a lot of detailed information about historical flooding across the area. Some people highlighted the importance of minimising impact on local drainage systems.	We will work closely with local landowners and will carry out a Flood Risk Assessment which will identify if any measures are required to reduce the impact on flood risk and drainage.
Cumulative impact	Some respondents noted other developments in the area and the potential cumulative impact our project may have.	We will engage with the local planning authority to consider the potential for cumulative impacts on the local area within the EIA.

Site Selection Update

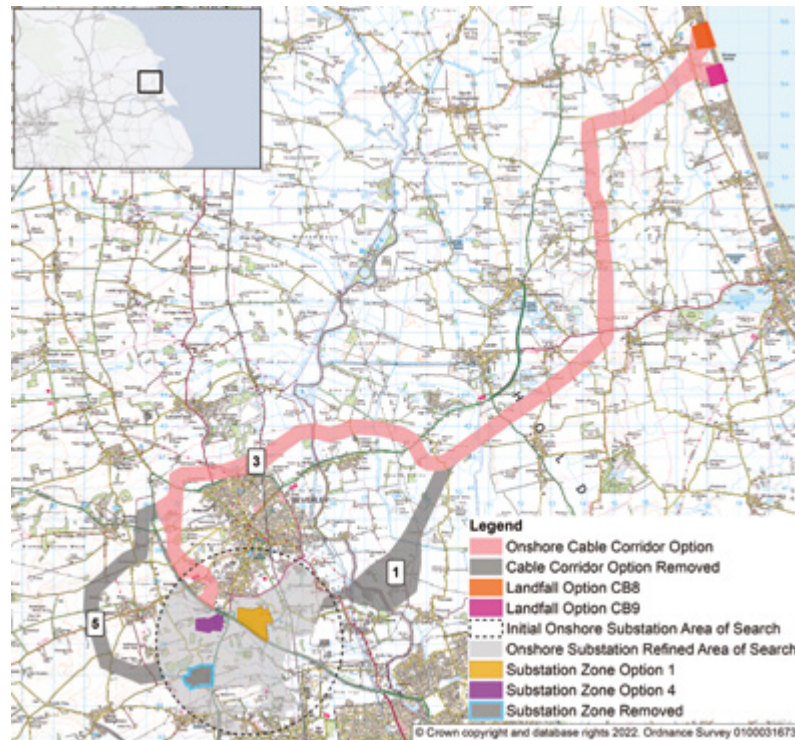
Following the conclusion of our Introductory Consultation, site selection work has continued with the aim of further reducing cable route and substation site options. This work has continued to give focus to our environmental, land and engineering assessment and development work ahead of the next public consultation, which is scheduled for Spring 2023.

Over the course of recent weeks, using feedback gathered from the consultation in combination with the results of our ongoing environmental, engineering and land investigations, we have successfully eliminated two cable route options and one substation site option from further consideration.

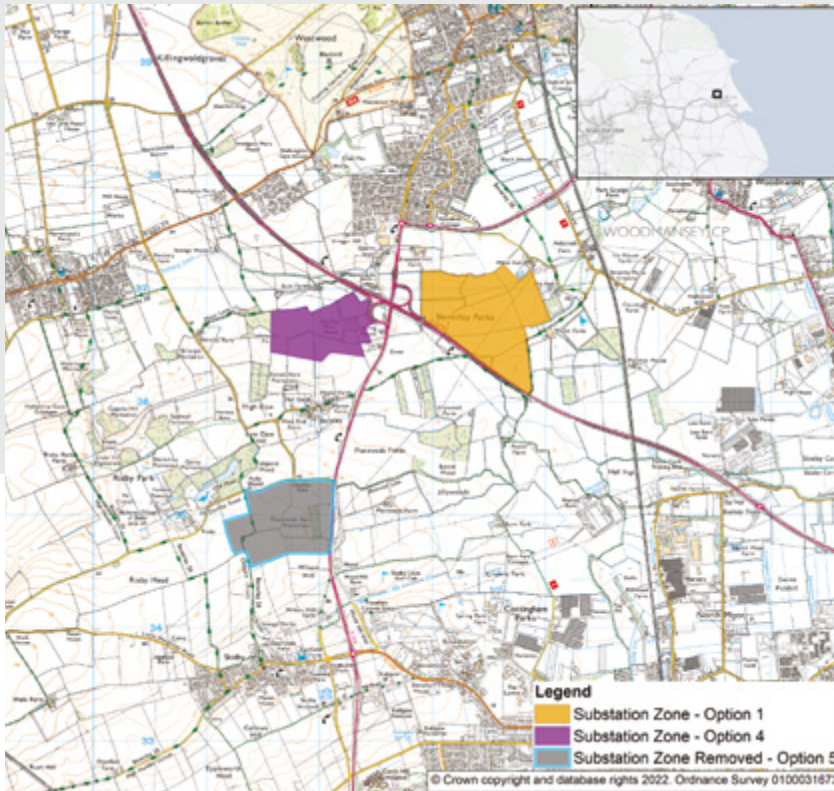
These refinements mean that only one cable route and two substation options remain under consideration. The figures to the right show the routes and zones removed from further consideration (in grey) and those substation zones to be taken forward as part of the next consultation.

Cable route 1 has been removed from consideration as it required routing beneath residential properties and had comparatively poor ground conditions, increased levels of flood risk, difficult access locations and potential location on proposed infrastructure developments.

Cable route 5 has also been removed from consideration. Our studies indicated that this route had high potential to impact buried archaeology and it presented significant engineering challenges close to the potential substation options remaining under consideration. In addition, this route was the longest route and, as such, its development could result in more environmental and social impacts during construction as well as being comparatively more expensive than shorter routes.

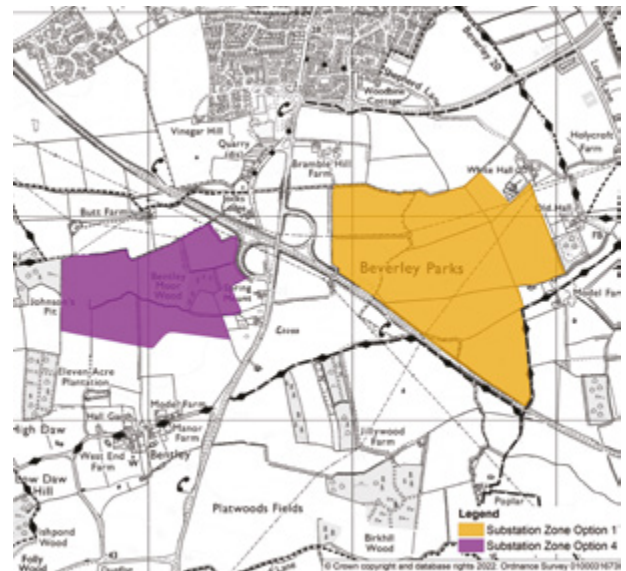


Cable route 3 is being carried forward into the next consultation. This route combines a high degree of engineering feasibility with comparatively low levels of environmental impact and good potential for efficient routing to the two substation options still being considered.



The blue substation zone (substation zone 5) has also been removed from further consideration due to potential impacts on buried archaeology and the visual amenity of Risby Park. It was also recognised that there is potential for landscape and visual impacts due to its location on a relatively prominent area of higher ground compared to other substation locations.

Both the purple and orange substation zones (see figure right) will be carried forward for further assessment and inclusion in the next consultation. Development of the two substations required for the DBS projects may be possible in one of the substation zones, although we may conclude that it will be necessary to locate one substation in each of the two zones.



Landowner Liaison

RWE has appointed Dalcour Maclaren, a firm of chartered surveyors in the area, to manage landowner liaison. If you are a landowner in the local area and think you may be impacted by the DBS projects and have not already been contacted, please email doggerbanksouth@dalcourmaclaren.com or phone **01423 613388**.

Further details of the options retained for consideration will be presented in our next consultation which is planned for Spring 2023.

Offshore Site Investigation Update

The 2022 offshore site investigation surveys have recently concluded. The campaign included geophysical, geotechnical and environmental surveys which will be used to inform site design and the Environmental Impact Assessment of the projects.

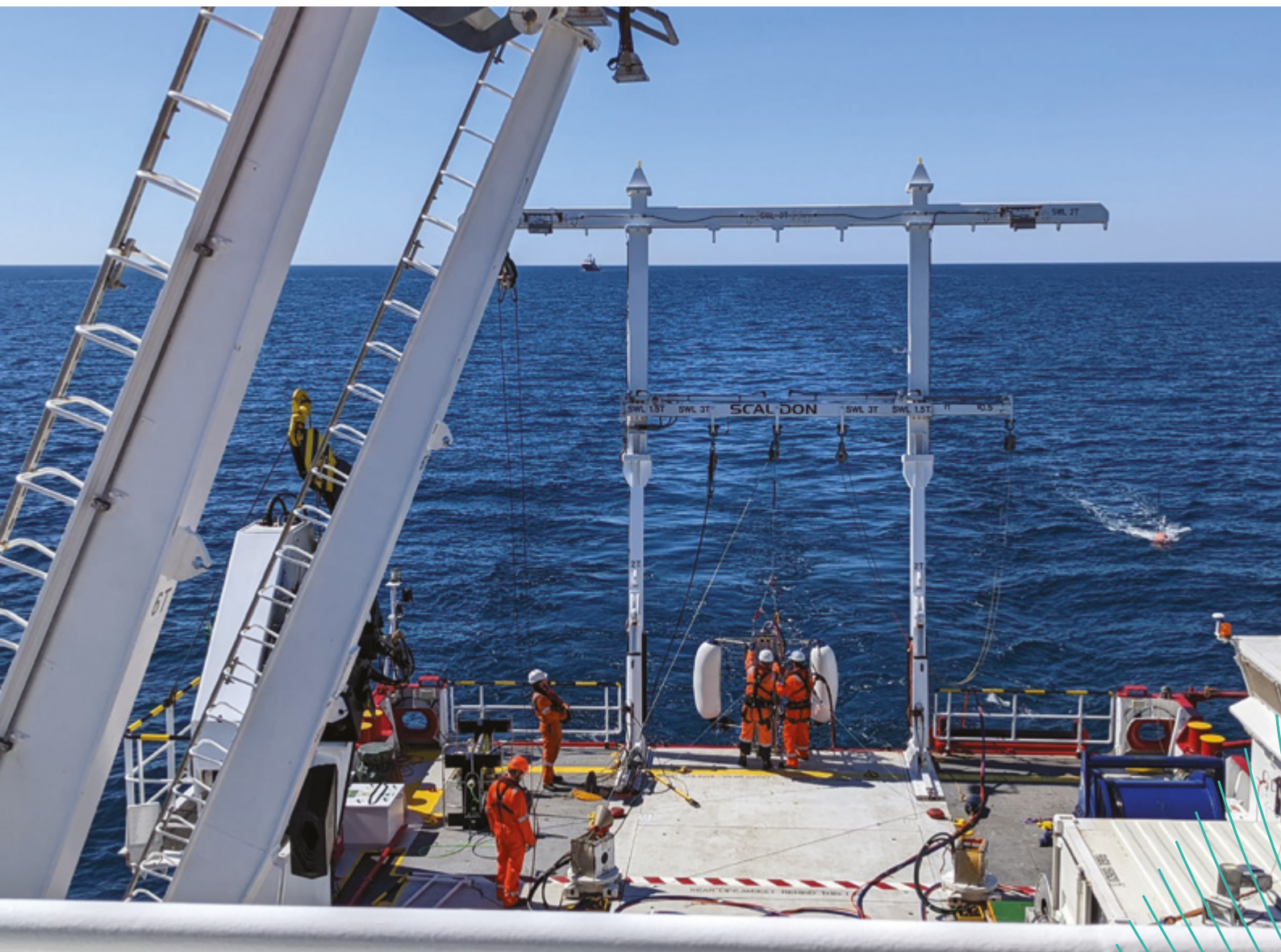
The DBS offshore arrays are located more than 100km off the east coast of Yorkshire in the North Sea and cover 1,000km². Together with the proposed offshore export cable routes, this resulted in a total survey scope exceeding 20,000km of survey lines, which was achieved through the contributions of eight different vessels offshore.

The site investigation data collation and analysis has now commenced in order to better understand the sites' conditions including the seafloor sediments, subsurface geology, habitat types and species present.

In addition to the site investigation campaign, a number of other offshore surveys are ongoing to identify activities within the vicinity of the project sites, including:

- Aerial surveys of birds and marine mammals;
- Commercial fishing activity;
- Vessel traffic surveys to identify the types and numbers of vessels operating in the area;
- Intertidal survey to establish habitat types and species present where the offshore export cables may come to shore.

The data collected from these surveys will feed into the planning process to help design the offshore export cable route, location of the offshore turbines and platforms, and construction methodologies.



Deployment of geophysical survey equipment from the Fugro Frontier.

Fisheries Liaison

The local fisheries industry is a key stakeholder group for the projects. A dedicated Fisheries Liaison company, Precision Marine Survey Limited, has been appointed.

Any fisheries-related stakeholders who would like to discuss the projects can contact Nigel Proctor on n.proctor@precisionmarine.co.uk or **+44 (0) 7702 730891**.

Onshore Survey Update

Surveys and desk studies of the Onshore Study Area are progressing, and these will inform the Environmental Impact Assessment that is being undertaken for the projects.

Ecological characterisation surveys are underway, mapping habitats and identifying the need for further, targeted species surveys for protected species such as badger, great crested newts, bats, water voles and otter. Further, overwintering bird surveys are taking place throughout the winter months to inform the bird assemblages present and identify potential constraints. The first phase of bat activity and roost surveys has now been completed, with another phase planned for next year.

A geomorphology baseline survey was completed in October which collected information about the existing condition of watercourses in the study area. It focused on the locations where crossings of main rivers or other sensitive watercourses are proposed.

Baseline noise surveys commenced in October. These are required to inform the assessments of the impacts of the landfall and substation construction noise, and the substation operational noise.

Traffic counting surveys started at the end of October at 21 locations across East Riding of Yorkshire and Kingston Upon Hull. The information gathered during these surveys will help to establish baseline traffic in the Traffic and Transport study area, and will inform the assessments carried out as part of the Environmental Impact Assessment (EIA).

A programme of archaeological surveys within the onshore study area has now started, focused on a number of priority areas of interest. These priority areas have been identified through a desk based assessment and agreed with heritage stakeholders.

Magnetometry surveys (using a gradiometer loaded onto a hand-pushed cart) will identify anomalies which may be of archaeological interest. The survey results will help to inform the locations for a second phase of targeted trial trenching. In addition, heritage walkover surveys have commenced which will characterise heritage assets within the onshore study area, particularly with regard to the settings of those heritage assets. The walkover surveys will provide a baseline against which the potential impacts can be assessed as part of the EIA.



A gradiometer fitted to a hand-pushed cart used during archaeological surveys.

Further information

For more background information on the project, please visit our project website at www.rwe.com/doggerbanksouth

Contact us:

Email: dbs@rwe.com

Telephone: 0800 254 5459

Website: www.rwe.com/doggerbanksouth

Post: FREEPOST DBSOWF